

## **WINTER TERM NEWSLETTER 2021**

Well we've made it to half term with no more lock downs and minimal disruption to classes! Long may this continue! Please note that the following lesson cancellations from the Autumn term have been applied to this billing by only charging you 9 weeks instead of 10 – Emersons Green Monday, Knowle and Long Ashton Wednesday, Wickwar Tuesday, Wednesday & Friday. All other cancellations have already been credited to your accounts. Please remember to check your account as well as the term billing in the school room.

**LONG ASHTON BRANCH** – Please check the Saturday timetable as this has slightly changed and your lesson may have moved by 15 minutes.

**PERFORMANCES** – We hope this year to start putting on shows once more and giving everyone an opportunity to perform in front of an audience once again. The January show for G6 and upwards will be on the 21<sup>st</sup> to 23<sup>rd</sup> January.

**CHARITY CABARET SHOW** – On Saturday 27<sup>th</sup> November 8 – 10 p.m. we are putting on this show in memory of our teacher, Miss Hilary Saxby, who died of a stroke in 2019. We are raising funds for the Stroke Association and would be grateful for offers of performances, raffle prizes, donations or any assistance you can give. Tickets for this will be on sale shortly.

**CHRISTMAS FAYRE, EMERSONS GREEN** - Some classes from Emersons Green Branch are performing at the Christmas Fayre at the Village Hall on Saturday 4<sup>th</sup> December. Please come and support this if you can.



**COMPETITION TEAMS** – We are looking for more students to join our competition teams so please let us know if you are interested. Competitions are just starting up once more and the team have performed really well in both CYD and Longwell Green and Kingswood Eisteddfod but we could do with some more dancers in the team now.

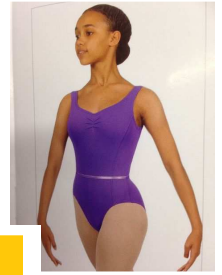
**MORE SUCCESSES!** – Our Irish dancers have all received amazing results in several recent Feis, winning many trophies! We have also had a few solo dancers performing at both Longwell Green and Gloucester Eisteddfods who have also performed really well achieving high marks.

**WARMLEY BRANCH** – The Batch is now open again! We are so happy to be back there and welcoming back children we have not seen for so long.

**FACEBOOK & GOOGLE** – We would be very grateful if you could like our face book page and give us some lovely Google reviews! It is a great way to help us build back up again after the last couple of years.

**CAR PARK AT FISHPONDS & EMERSONS GREEN** – Please remember to enter your registration into the tablet in reception. You do not need to do this at Fishponds if we have issued you a permanent permit (unless you change your car). If you receive a PCN for either car park please speak to us so that we can sort it out for you. DO NOT PAY IT!

**NEW UNIFORM FOR ISTD BALLET GRADES 1 & 2** – We have changed the uniform for these grades. We are bringing it in from January 2022. If you are new into the grade and not likely to be taking an exam for a while then you may wish to buy the new lavender leotard now. If you are possibly taking an exam soon, then stay in your aqua for the moment. Both colours will be available in our shop this term.



**TAPATHON** – This will take place on Sunday 21<sup>st</sup> November at Dance Station this year. We will probably be dancing in all 3 studios as we may have a fast speed, a slower speed, and a simplified routine all running at the same time. It will also allow us to space out a little more. We will not do the party afterwards this time. There will be options to participate on zoom should you happen to be unwell at the time. T-Shirts should be in and ready for collection the week before the event.



**JACKETS** – Please let me have any orders for Christmas as soon as possible. We need to get them in by the end of November.

**EXTRA CLASSES** – Don't forget you have the opportunity to add any of these EXTRA CLASSES on Saturdays at Dance Station to your regular subjects at special prices. Please ask if you need details.

**MUSIC THEATRE** \* **JUNIOR CONTEMPORARY** \* **BALLET EXTRA** \* **JAZZ N'STRETCH** \* **ACRO**

**DATES FOR YOUR DIARY**

Sat 20<sup>th</sup> Nov Start of 2<sup>nd</sup> 10 week term  
 Fri 17<sup>th</sup> Dec Finish for Christmas  
 Sat 8<sup>th</sup> Jan Start back  
 Sat 19<sup>th</sup> Feb Start of 3<sup>rd</sup> 10 week term  
 Sun 20<sup>th</sup> Feb Finish for half term  
 Mon 28<sup>th</sup> Feb Start back  
 Fri 8<sup>th</sup> Apr Finish for Easter  
 Mon 25<sup>th</sup> Apr Start back  
 Mon 2<sup>nd</sup> May Bank Holiday  
 Mon 23<sup>rd</sup> May Start of 4<sup>th</sup> 8 week term  
 Fri 27<sup>th</sup> May Finish for half term



**HAPPY CHRISTMAS TO YOU ALL!**  
*Any adverse weather conditions – please check website and facebook page!*

Miss Lucy is off on the high seas to join TAP FACTORY on a Royal Caribbean Cruise Ship!